

# zero waste product guidelines

## DESIGN + MATERIALS:

- Material is designed to deconstruct. The whole product should not have to be replaced. For example, Pipette tip boxes. The preferred design would be for the wafers to be replaced rather than the whole box be replaced.
- If the product has recyclable parts, those parts should be recycled into one of the company's other products, if not the same product that the part came from.
- Paper products should be designed to be compostable.
- if plastics are being used, they should only be plastics #1 and #2. Only #1 and #2 are recyclable in Berkeley.
- If a product cannot be reused, repaired, disassembled, remanufactured, recycled or composted it should be redesigned or progressively phased out from the market.
- If the product does have compostable or recyclable parts, ensure that the information is accessible, clear, and detailed.

## PACKAGING:

- If the product includes **styrofoam** in the packaging, it is not zero waste. Styrofoam must be landfilled.
- Packaging must be **separable** so that the pieces can be disposed of **properly**. If there is aluminum stuck to cardboard, that is not separable and does not constitute as zero waste. Aluminum is bottles & cans recycling, while cardboard is mixed paper.
- Once the product has been used, every part of the packaging should be either compostable or recyclable.
- The product should not be shipped in styrofoam containers. The company should offer take-back programs to reduce waste on campus. The company should not use an enormous amount of packaging to deliver the product.
- An example of zero waste packaging is how Amazon Fresh delivers items in reusable totes that they pick up on your next order.

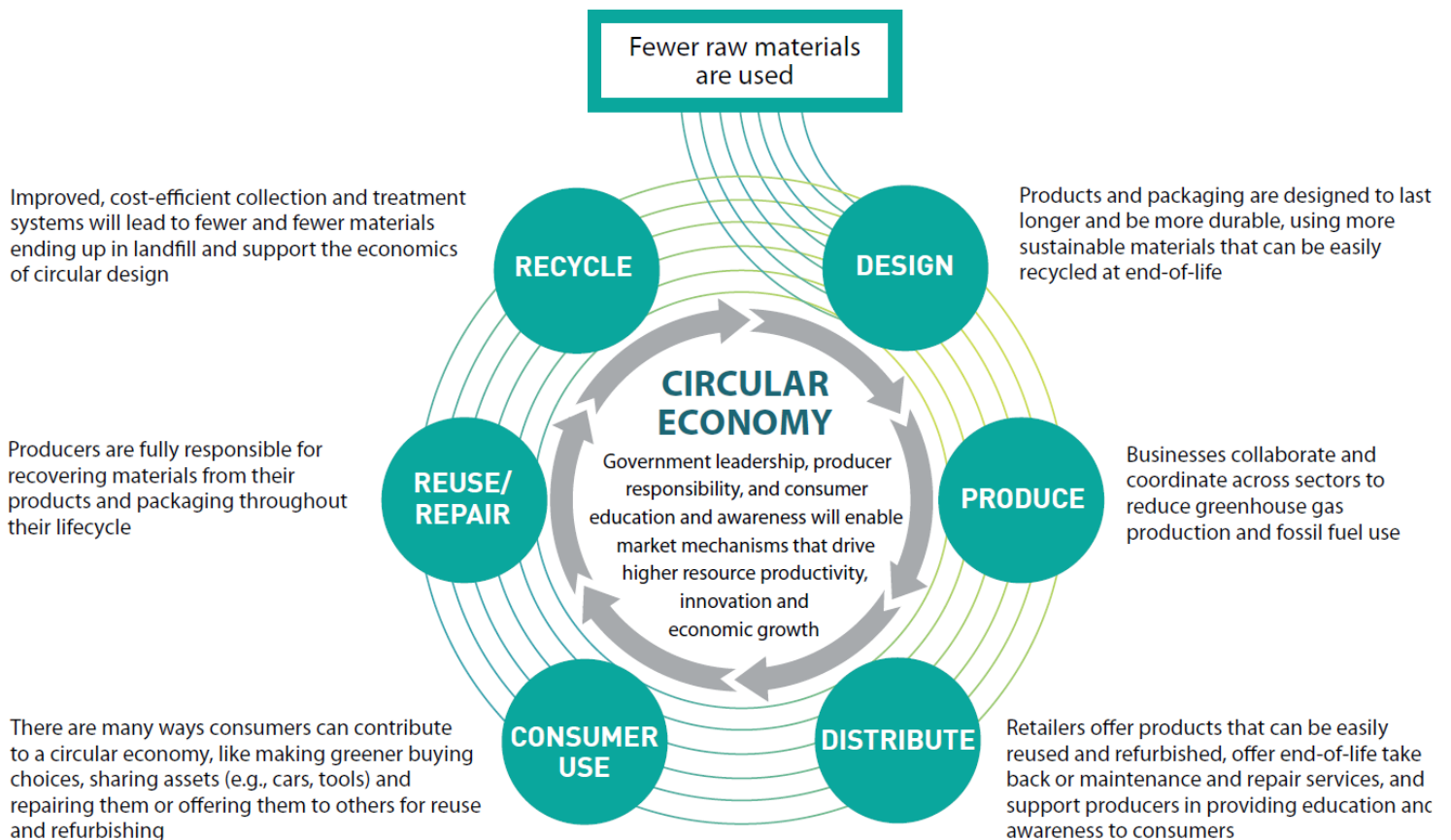
# TRANSPORTATION:

- If the products themselves are recyclable, the company should be offering take-back programs that recycle those products at a local facility.
- The product should be repaired, disassembled, remanufactured, recycled or composted at a **local** facility.
- For example, VWR is recognized by the EPA as a SmartWay Transport partner. See here.

# ZERO WASTE:

- Volume must be maximized. >>> look to reduce volume (reducing volume = reducing waste).

# THE MODEL TO USE:



# EXAMPLES OF ZERO WASTE PRODUCTS:

See here.